



Product Description : **3 Holes Clay Block (MB)**

Product Size : 215 x 100 x 135 mm

Product Packing : 400 pcs/plt 9 plts/Load



Product Description : **10 Holes Clay Block (KL)**

Product Size : 215 x 100 x 135 mm

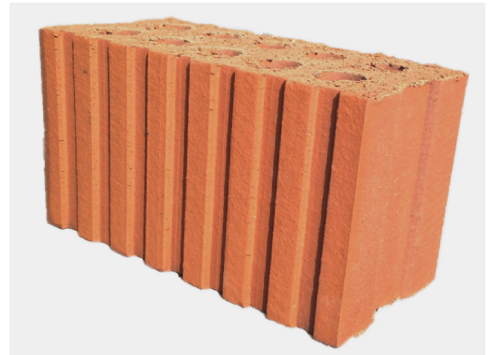
Product Packing : 384 pcs/plt 9 plts/Load



Product Description : **10 Holes Clay Block (MB)**

Product Size : 215 x 100 x 135 mm

Product Packing : 400 pcs/plt 9 plts/Load



Product Description : **10 Holes Clay Block (HS)**

Product Size : 215 x 100 x 135 mm

Product Packing : 288 pcs/plt 12 plts/Load



Product Description : **Solid Brick 1st Grade (KL)**

Product Size : 215 x 100 x 68 mm

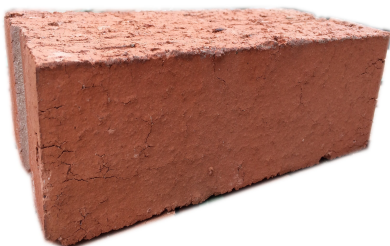
Product Packing : 600 pcs/plt 9 plts/Load



Product Description : **Solid Brick 2nd Grade (KKB)**

Product Size : 215 x 100 x 68 mm

Product Packing : 640 pcs/plt 9 plts/Load



Product Description : **Solid Brick 2nd Grade (MB)**

Product Size : 215 x 100 x 68 mm

Product Packing : 600 pcs/plt 9 plts/Load



Product Description : **Solid Brick 2nd Grade (CM)**

Product Size : 215 x 100 x 68 mm

Product Packing : 600 pcs/plt 9 plts/Load



Product Description : **Solid Brick 2nd Grade (HS)**

Product Size : 215 x 100 x 68 mm

Product Packing : 576 pcs/plt 9 plts/Load



Product Description : **M2 Solid Brick 1st Grade (KL)**

Product Size : 190 x 90 x 68 mm

Product Packing : 750 pcs/plt 9 plts/Load



Product Description : **M211 3 Holes Modular Brick (KL)**

Product Size : 190 x 90 x 90 mm

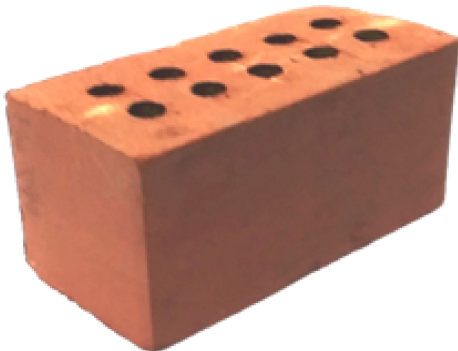
Product Packing : 650 pcs/plt 9 plts/Load



Product Description : **M211 3 Holes Modular Brick (HS)**

Product Size : 190 x 90 x 90 mm

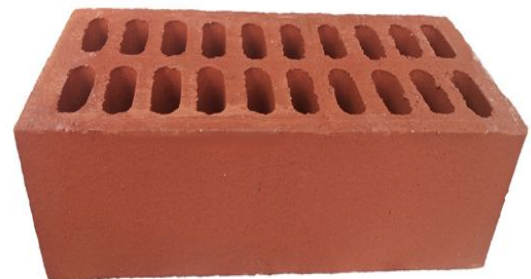
Product Packing : 448 pcs/plt 12 plts/Load



Product Description : **M211 Smooth Facing Brick (Red)**

Product Size : 190 x 90 x 90 mm

Product Packing : 818 pcs/plt



Product Description : **Smooth Facing Brick (Red) (4 Sided)**

Product Size : 215 x 100 x 68 mm

Product Packing : 450 pcs/plt



Product Description : **M211 Single Bullnose**

Product Size : 190 x 90 x 90 mm

Product Packing : 818 pcs/plt



Product Description : **SK 32 Fire Brick**

Product Size : 230 x 114 x 65 mm

Product Packing : 406 pcs/plt

Solid Concrete Brick & P C Vent Block



Product Description : **Solid Concrete Brick**

Product Size : a. 190 x 90 x 70 mm

b. 190 x 90 x 90 mm

Product Packing : a. 580 pcs/plt, 10 plts/load

b. 420 pcs/plt, 11 plts/load



Product Description : **Solid Concrete Brick U Shape**

Product Size : a. 190 x 90 x 70 mm

b. 190 x 90 x 90 mm

Product Packing : a. 765 pcs/plt, 10 plts/load

b. 600 pcs/plt, 11 plts/load



Product Description : **Solid Concrete Brick L Shape**

Product Size : a. 190 x 90 x 70 mm

b. 190 x 90 x 90 mm

Product Packing : a. 765 pcs/plt, 10 plts/load

b. 600 pcs/plt, 11 plts/load



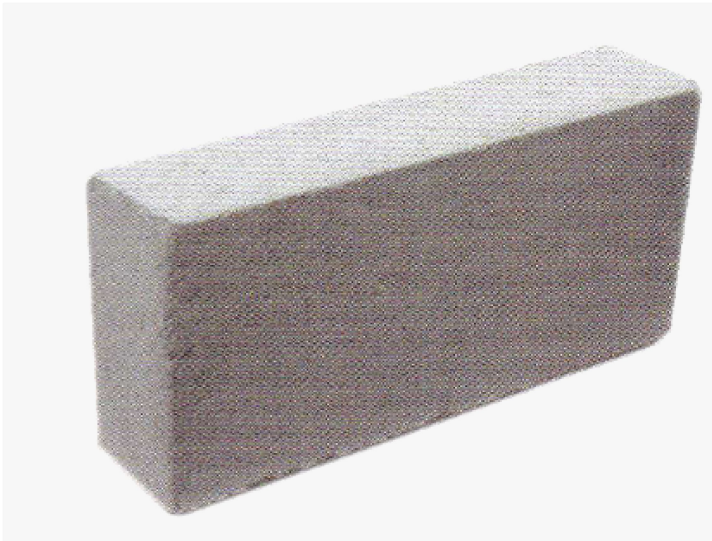
Product Description : **P C Vent Block With Netting (Wet Cast)**

Product Size : a. 390 x 190 x 100 mm

b. 390 x 190 x 200 mm

Product Packing : a. 110 pcs/plt, 10 plts/load

b. 50 pcs/plt, 11 plts/load



Product Description : **CMU - 100 mm Solid Concrete Block
(2 Hours Fire Rated)**

Product Size : 390 x 190 x 100 mm

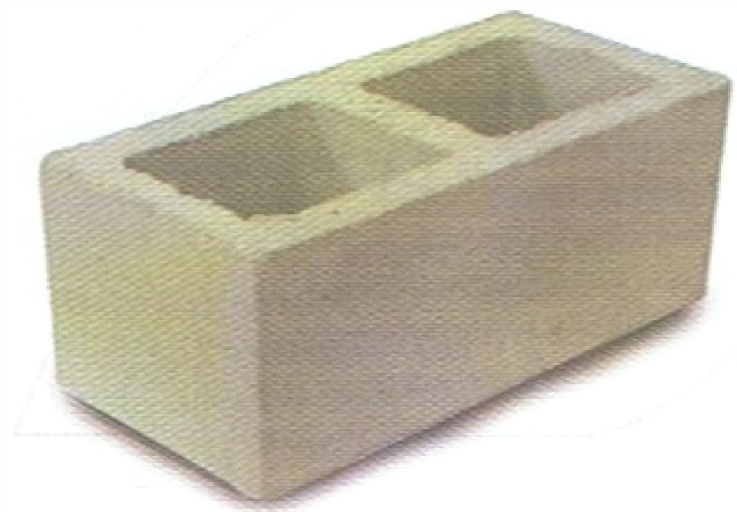
Product Packing : 100 pcs/plt, 10 plts/load



Product Description : **Concrete Masonry Unit (CMU)**

Product Size : a. 390 x 190 x 90 mm
b. 390 x 190 x 140 mm
c. 390 x 190 x 190 mm

Product Packing : a. 122 pcs/plt, 11 plts/load
b. 96 pcs/plt, 11 plts/load
c. 72 pcs/plt, 12 plts/load



Hollow Block & Light Weight Concrete Block



Product Description : **Hollow Block**

Product Size : a. 450 x 150 x 65 mm
b. 390 x 190 x 100 mm
c. 390 x 190 x 150 mm
d. 390 x 190 x 200 mm

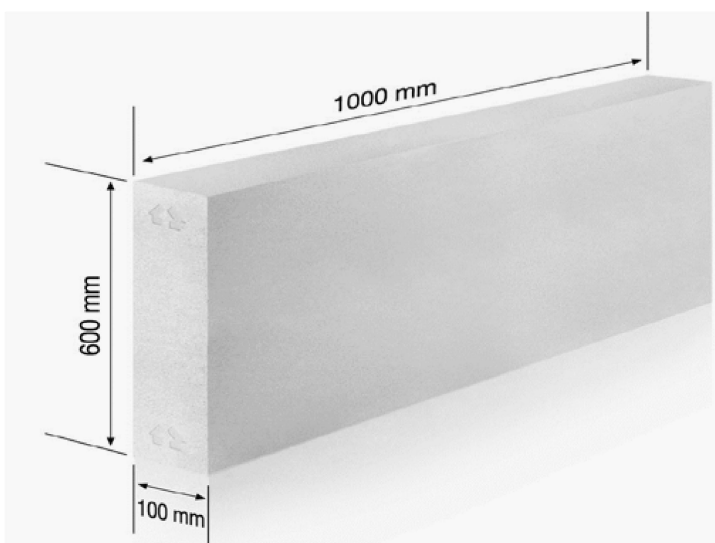
Product Packing : a. 180 pcs/plt, 10 plts/load
b. 120 pcs/plt, 10 plts/load
c. 70 pcs/plt, 10 plts/load
d. 60 pcs/plt, 10 plts/load



Product Description : **Light Weight Concrete Block**

Product Size : a. 600 x 200 x 75 mm
b. 600 x 200 x 100 mm
c. 600 x 200 x 150 mm
d. 600 x 200 x 200 mm

Product Packing : a. 240 pcs/plt, 10 plts/load
b. 180 pcs/plt, 10 plts/load
c. 120 pcs/plt, 10 plts/load
d i. 84 pcs/plt, 10 plts/load
d ii. 90 pcs/plt, 10 plts/load



Product Description : **Mini Panel**

Product Size : 1000 x 600 x 100 mm



Mulia Glass Block - Clear

Code : 9500

Size : 190 x 190 x 95 mm

Packing : 6 pcs / box



Mulia Glass Block - Quadra

Code : 9501

Size : 190 x 190 x 95 mm

Packing : 6 pcs / box



Mulia Glass Block - Wave

Code : 9502

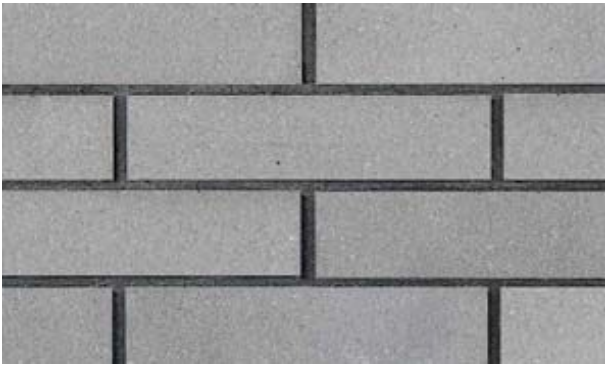
Size : 190 x 190 x 95 mm

Packing : 6 pcs / box



Smooth Facing Tile (636)

Packing : 60 pcs / Carton
(1 Carton = 1 m²)
Size : 240 x 60 x 11 mm



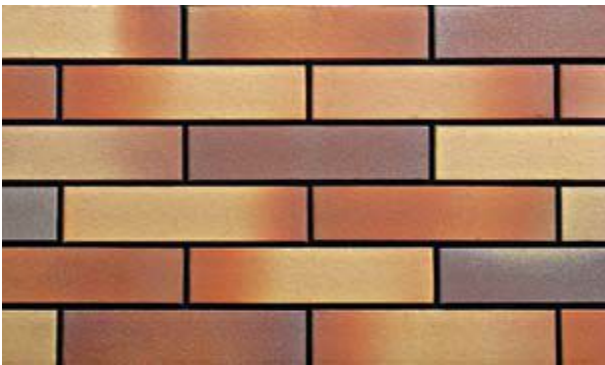
Smooth Facing Tile (883)

Packing : 60 pcs / Carton
(1 Carton = 1 m²)
Size : 240 x 60 x 11 mm



Smooth Facing Tile (6322)

Packing : 60 pcs / Carton
(1 Carton = 1 m²)
Size : 240 x 60 x 11 mm



Smooth Facing Tile (2301)

Packing : 60 pcs / Carton
(1 Carton = 1 m²)
Size : 240 x 60 x 11 mm



Wire Cut Tile (6107)

Packing : 50 pcs / Carton
(1 Carton = 0.8 m²)
Size : 240 x 60 x 11 mm



Vintage Ledgestone

$0.6 \text{ m}^2 = 1 \text{ Carton}$

LPD - 03



River Stone

$1 \text{ m}^2 = 1 \text{ Carton}$

LPE - 70



Castle Stone

$0.92 \text{ m}^2 = 1 \text{ Carton}$

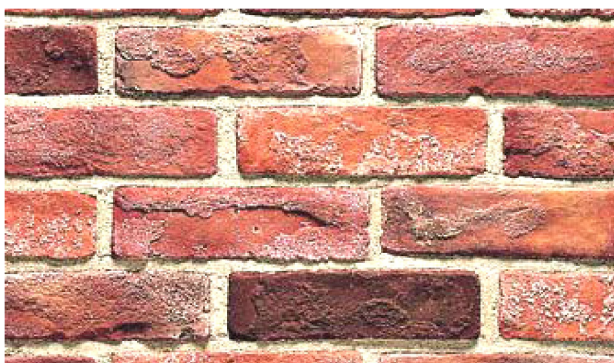
LPF - 30



Classic Stone

$0.4 \text{ m}^2 = 1 \text{ Carton}$

LPS - 04



Culture Tile

$1 \text{ m}^2 = 1 \text{ Cartons}$

LPZ - 18A



Concrete Sand (White)



Plaster Sand



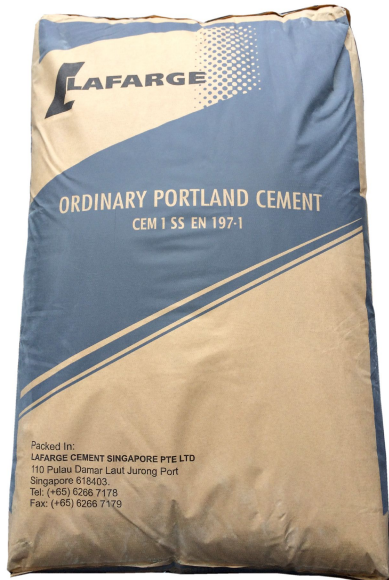
20mm Aggregate



9 - 12mm Chipping



Fine Sand



Lafarge - OPC Cement
50kg /bag, 40bags /plt



Lafarge - Phoenix Cement (Green)
50kg /bag, 40bags /plt



White Cement
40kg /bag, 40bags /plt



Dreb Render
40kg /bag, 50bags /plt



Dreb Floor Screed
40kg /bag, 50bags /plt



Dreb Skim Coat
40kg /bag, 50bags /plt



E-Mix Easi Plaster
40kg /bag, 50bags /plt



E-Mix Easi Render
40kg /bag, 50bags /plt



E-Mix Tile Fix Grey
40kg /bag, 50bags /plt



GP 3 Mortar
40kg /bag, 50bags /plt



GP 3 Floor Screed
40kg /bag, 50bags /plt



SK 30 Refractory Mortar
50kg /bag



Lanko Grout 280
25kg /bag, 77bags /plt



Davco Fine Plaster 3in1
40kg /bag, 50bags /plt



Davco Floor Screed
40kg /bag, 50bags /plt



Davco Block Bond
25kg /bag, 77bags /plt



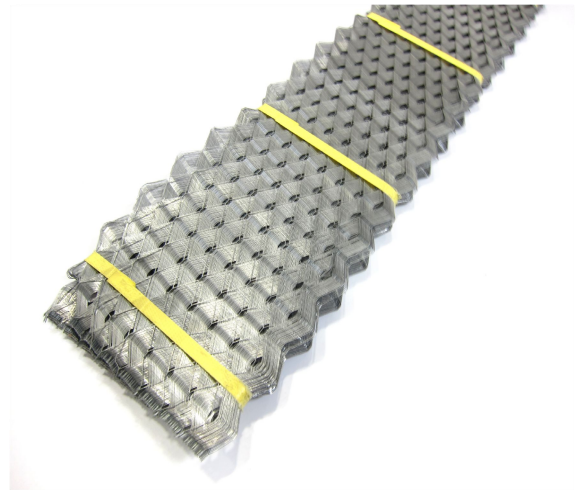
Davco DW 1
20L / pail, 200L / Drum



Jurcem Bonding Agent
20L / pail, 200L / Drum



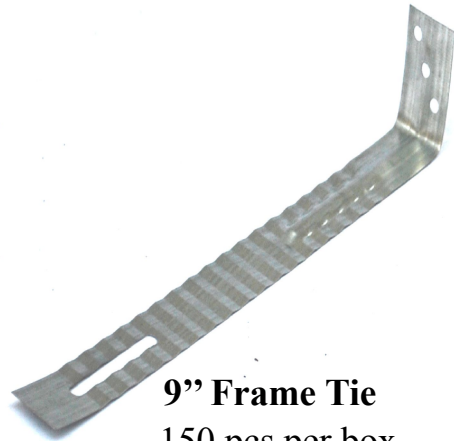
2.5" / 4" Coil Mesh
96 coils / 60 coils per box



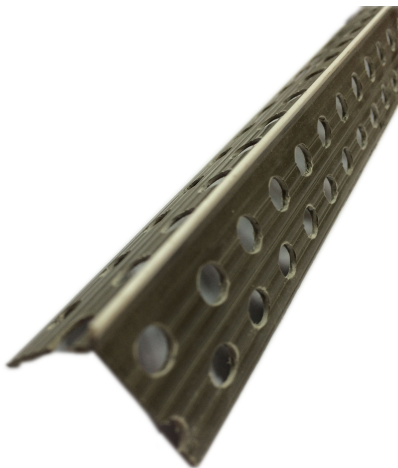
4" / 6" / 8" Stripmesh
100 strips / bundle



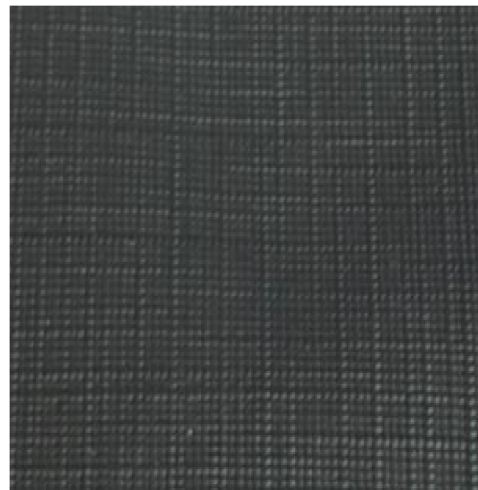
4" / 9" Damp Proof Course
48 coils / 24 coils per box



9" Frame Tie
150 pcs per box



4GW Corner Bead
25 pcs per bundle



PVC Protecting Sheet
40 m per roll